

Esta es mi familia

(This Is My Family!)

1. Cut up the set of **pictures** from the family tree around the dotted lines, keeping their names underneath.
2. Cut up the set of **relationship words** along the dotted lines.
3. Look at the whole **family tree** picture – can you match up each person with the right relationship word? Stick the word underneath that person's name.
4. Put each picture into the right part of the **table** for *feminine* or *masculine*.
5. Take a photo of your fabulous work and stick it in your book with the family tree!

feminine	masculine

Esta es mi familia

(This Is My Family!)

Mi familia (My Family)



José

relationship word here



Rocío

relationship word here



Francisco

relationship word here



Carmen

relationship word here



Isabel

relationship word here



Manuel

relationship word here



Pilar

relationship word here



Pablo

relationship word here



Pedro

relationship word here



Cristina

relationship word here



Elena

relationship word here



Antonio

relationship word here

Relationship Words

Padre

Abuelo

Primo

Madre

Abuela

Prima

Hermano

Tía

Sobrina

Hermana

Tío

Sobrino

Esta es mi familia

(This Is My Family!)

1. Cut up the set of **pictures** from the family tree around the dotted lines, keeping their names underneath.
2. Cut up the set of **relationship words** along the dotted lines.
3. Look at the whole **family tree** picture – can you match up each person with the right relationship word? Stick the word underneath that person's name.
4. Put each picture into the right part of the **table** for *feminine* or *masculine*.
5. Take a photo of your fabulous work and stick it in your book with the family tree!

feminine	masculine

Esta es mi familia

(This Is My Family!)

Mi familia (My Family)



José

relationship word here



Rocío

relationship word here



Francisco

relationship word here



Carmen

relationship word here



Isabel

relationship word here



Manuel

relationship word here



Pilar

relationship word here



Pablo

relationship word here



Pedro

relationship word here



Cristina

relationship word here



Elena

relationship word here



Antonio

relationship word here

Relationship Words

Padre

Madre

Hermano

Hermana

Abuelo

Abuela

Tía

Tío

Primo

Prima

Sobrino

Sobrino

Esta es mi familia

(This Is My Family!)

1. Cut up the set of **pictures** from the family tree around the dotted lines, keeping their names underneath.
2. Look at the whole **family tree** picture – can you match up each person with the right **relationship word** from the word bank? Write the word underneath that person's name.
3. Which relationship words are masculinas (male) and femeninas (female)? Stick each picture into the right part of the **table** for masculinas or femeninas.
4. Three of the relationship words are plurales (plural). How do you know which ones? Write the words and their meaning in the plural... part of the table.
5. Take a photo of your fabulous work and stick it in your book with the family tree!

singular		plural
masculinas	femeninas	

Esta es mi familia

(This Is My Family!)

Mi familia (My Family)



José

relationship word here



Rocío

relationship word here



Francisco

relationship word here



Carmen

relationship word here



Isabel

relationship word here



Manuel

relationship word here



Pilar

relationship word here



Pablo

relationship word here



Pedro

relationship word here



Cristina

relationship word here



Elena

relationship word here



Antonio

relationship word here

Relationship Words

Padre

Abuelo

Primo

Madre

Abuela

Prima

Hermano

Tía

Sobrina

Hermana

Tío

Sobrino

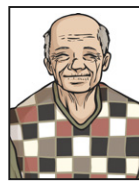


Jade

José



Rocio



Hugo

El árbol de mi familia (Family Tree)



Pablo



Carmen



Francisco



Louis



Pilar



Lucas



Manuel



Yo (Me)



Isabel



Ethan



Pedro



Cristina



Elena



Antonio

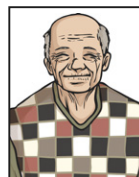


Jade

José



Rocio



Hugo

El árbol de mi familia (Family Tree)



Pablo



Carmen



Francisco



Louis



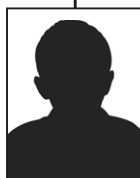
Pilar



Lucas



Manuel



Yo (Me)



Isabel



Ethan



Pedro



Cristina



Elena



Antonio